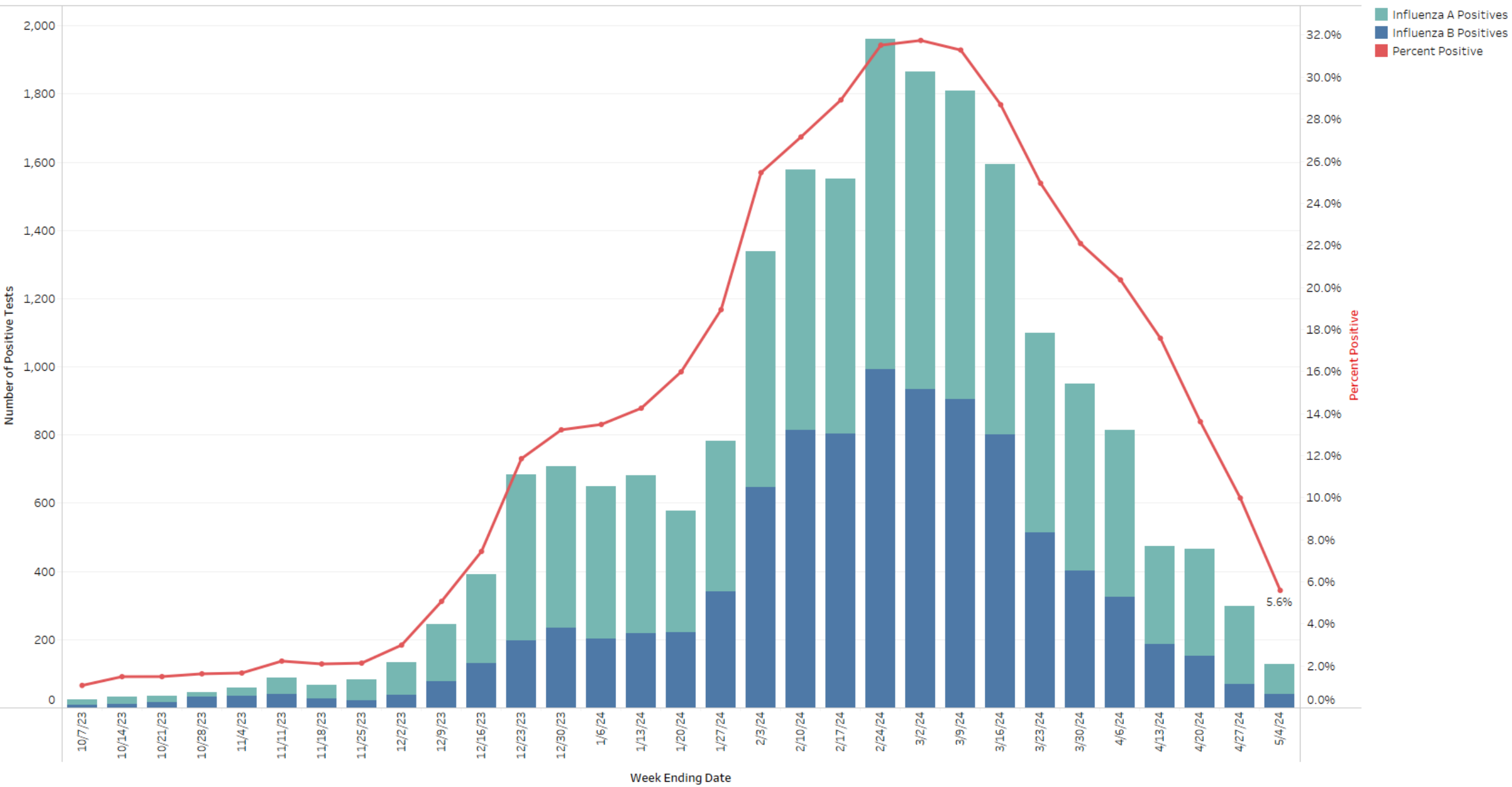
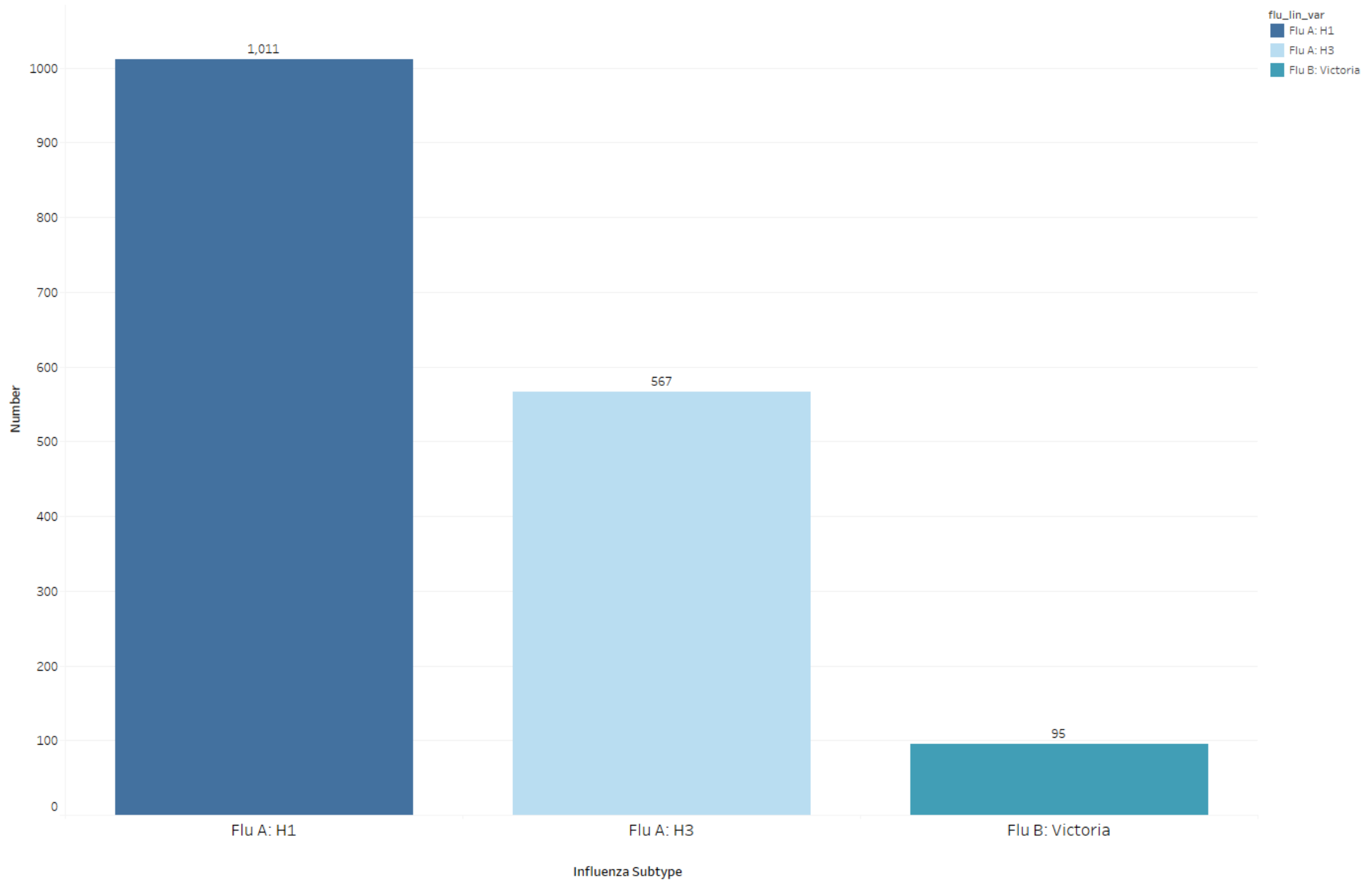


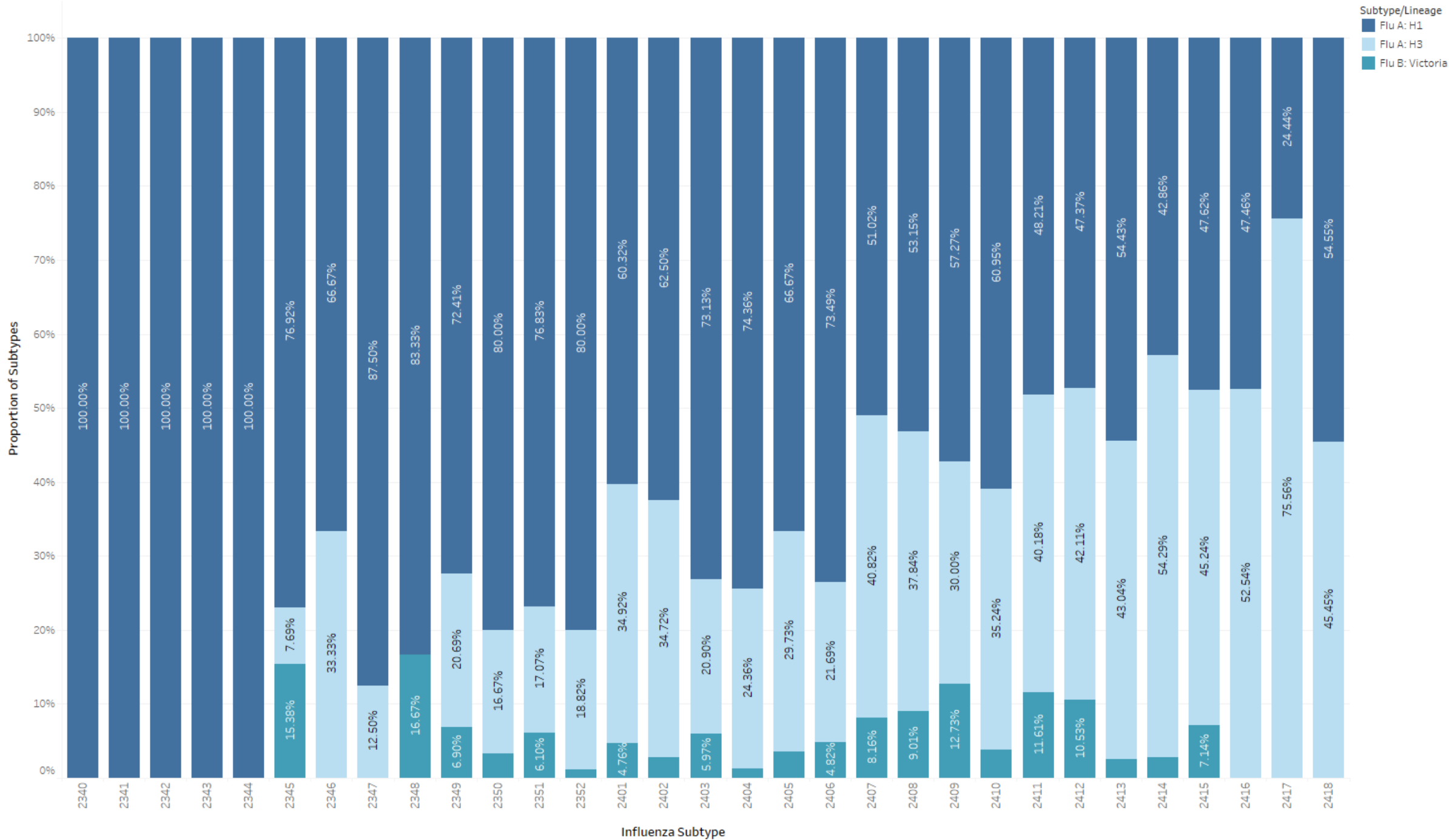
Number of Influenza A & B Positive Tests and Percent Positive, by Week Ending Date, 2023-24



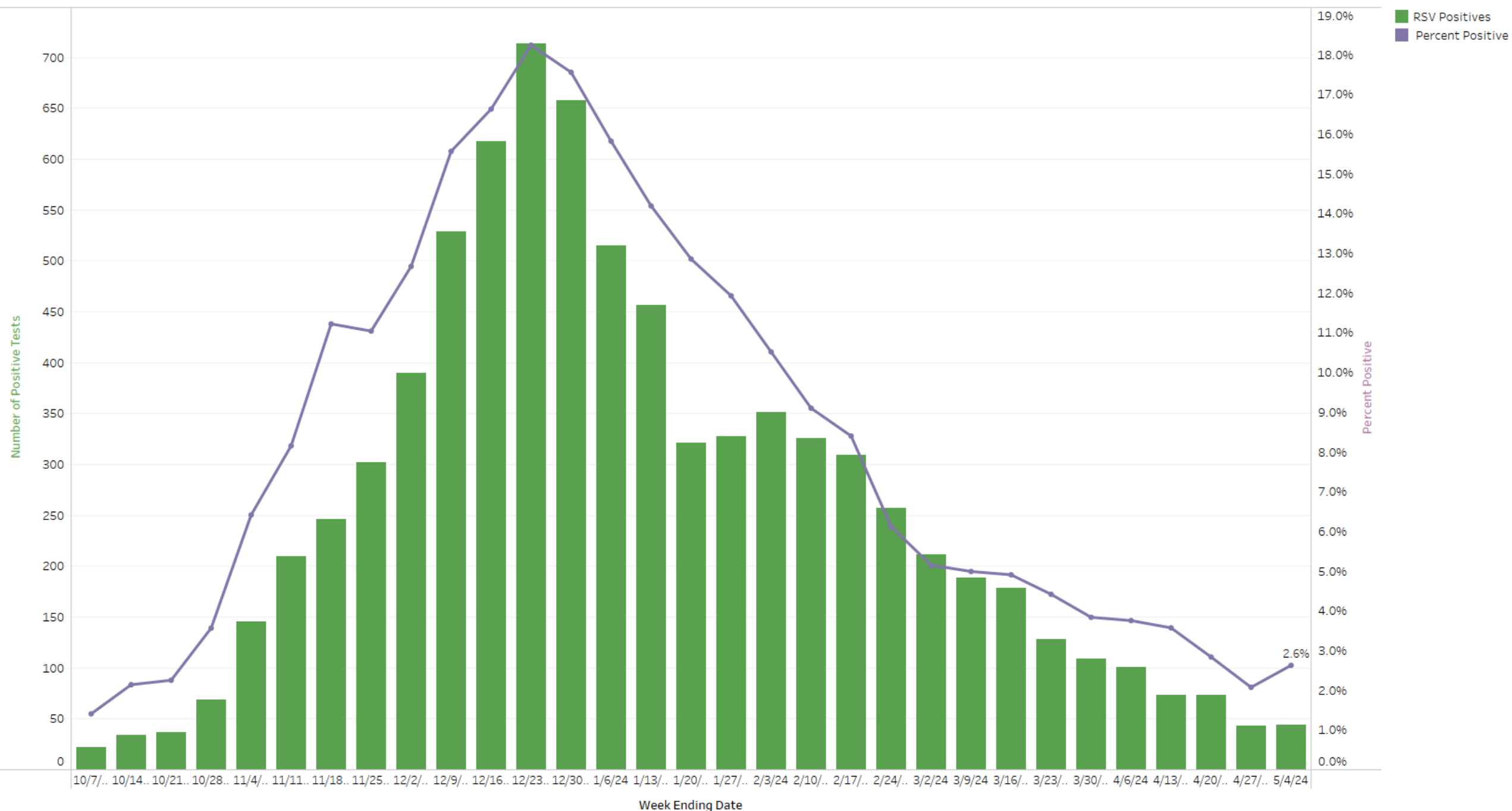
Cumulative Influenza Positives by Subtype, 2023-24



Weekly Influenza Subtype Proportions, 2023-24



Number of Positive RSV Tests and Percent Positive by Week Ending Date, 2023-24



HPAI Update (as of 5/13/24)

- No Nebraskan dairy farms have tested positive to date. We continue to work alongside Nebraska Department of Agriculture, who is the lead agency in this response, to plan and prepare for a potential detection
 - Nationally, there have been 42 dairy farm detections in 9 states
- Overall risk to humans is still considered low, per CDC
 - 1 confirmed A(H5N1) human case to date; had conjunctivitis with no respiratory symptoms
- **If your lab performs molecular influenza testing and receives a test result of Influenza A no subtype, please notify DHHS immediately and send specimen to NPHL for further subtyping**
- **If your laboratory receives a call from a clinician regarding the testing of a patient with suspected HPAI infection direct them to their state or local health department for approval. Once approval is received, send an appropriate specimen to NPHL for testing.**
 - If patient reports conjunctivitis, a conjunctival specimen would be acceptable to send along with nasopharyngeal swabs.
- CDC Resource: <https://www.cdc.gov/flu/avianflu/healthprofessionals.htm>